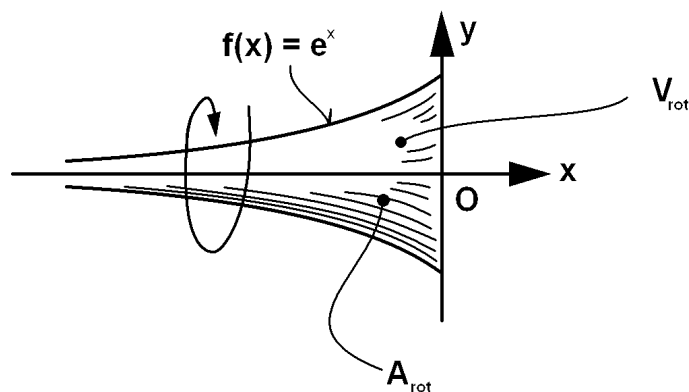


Übungen in Analysis \diamond Exercices en Analyse \diamond T. B2 \diamond II / 13

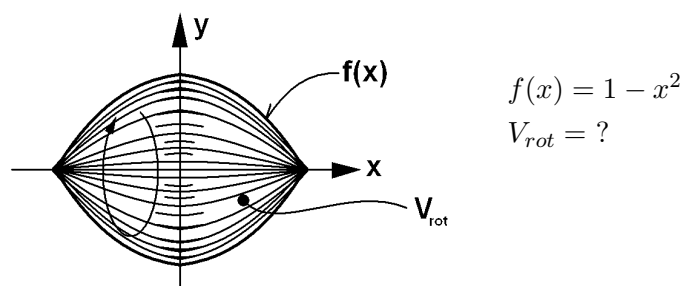
- Probl. 1**
- (a) $\int_1^2 (3x + 5)^{1000} dx = ?$
- (b) $\int_1^2 \frac{(\ln(x))^2}{x} dx = ?$
- (c) $\int_0^1 (e^{x^2})^2 dx = ?$

Probl. 2



$$V_{rot} = ? \quad A_{rot} = ?$$

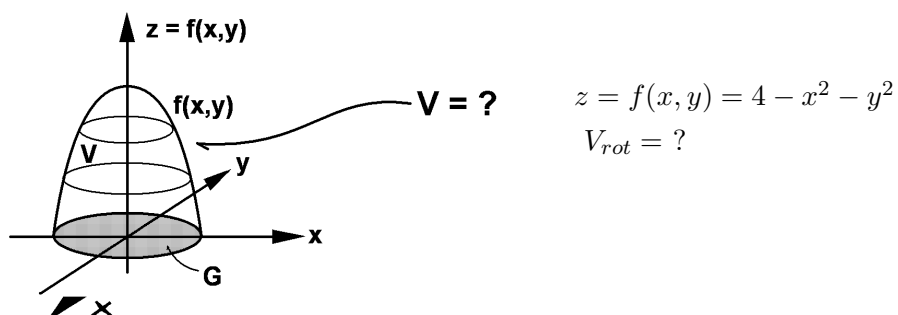
Probl. 3



$$f(x) = 1 - x^2$$

$$V_{rot} = ?$$

Probl. 4



$$z = f(x,y) = 4 - x^2 - y^2$$

$$V_{rot} = ?$$